

Townsend Offers:

Boneless, Skinless
Breasts

Tenders

Boneless, Skinless
Legs

Whole Legs

Whole Wings

Party Wings
(Machine Cut)



Townsend

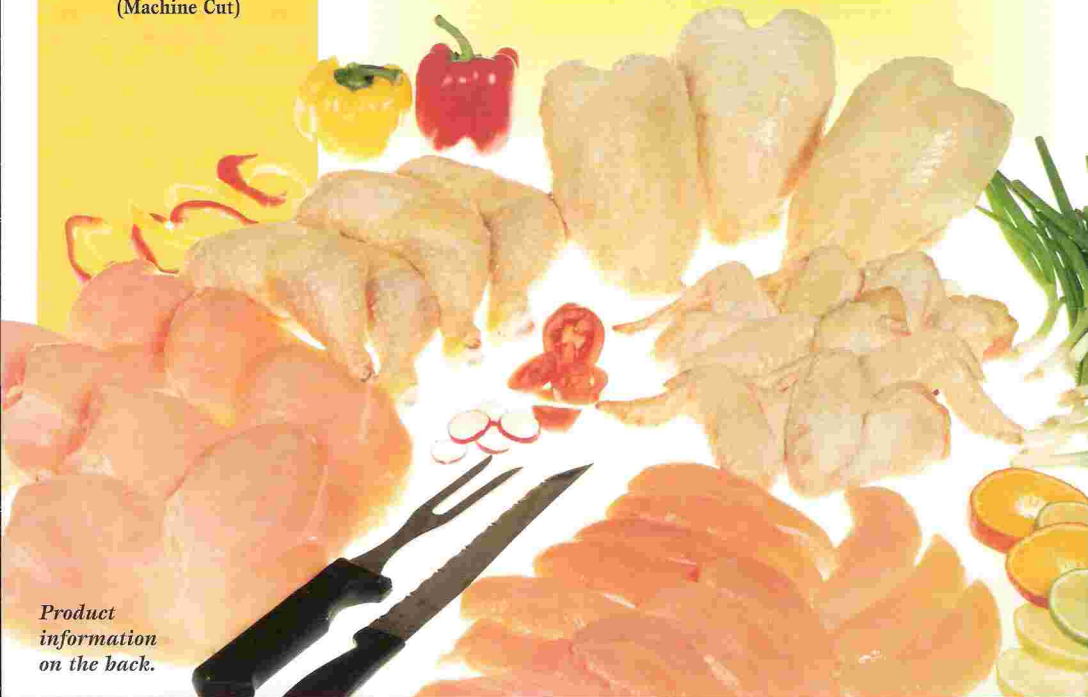
Jumbo Chicken Parts

Master 40 Pound Case

◆
Jumbo Bone-in and Boneless Parts

◆
CVP, Ice or CO₂

◆
White Skin



*Product
information
on the back.*

Call today to order 1-800-422-4425

Townsend Product Line

Product Code	Description	Case/ Pack	Net Weight	Calories	Fat (g)	Chol. (mg)	Sodium (g)	Carb. (g)	Protein (g)
78	Jumbo Wog	6 Head	Catch Wt.	240	18	80	75	0	19
172	Tenders	4/10	40#	110	0	70	40	0	27
205	Random Boneless Chicken Breast	4/10	40#	120	1.5	65	75	0	26
305	Jumbo Whole Legs	40#	40#	140	4.5	90	95	0	23
340	Boneless Skinless Leg Meat	4/10	40#	140	4.5	90	95	0	23
341	Marinated Boneless Leg Meat	4/10	40#	110	3.5	75	370	0	19
422	Marinated Boneless Thigh Meat	4/10	40#	110	3.5	80	370	0	19
468	Jumbo Party Chicken Wings	4/10	40#	180	11	120	75	0	21
472	Whole Jumbo Wings	40#	40#	250	18	85	80	0	21
3504	Marinated Boneless Breast	4/10	40#	100	1	55	350	0	22

Nutritional information based on USDA 9 CFR 381.412, Table 2-RACC.